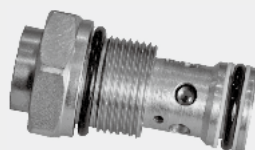


1.6

Check valve - cartridge

Type RVM10120

Up to 350 bar
Up to 100 L/min



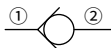
Contents

Ordering code	02
Technical data	02
Characteristic curves	02
Installation dimensions	03

Features

- Leakage-free closure in one direction
- Cartridge, for installation in manifold blocks

Symbol



Ordering code



Check valve - cartridge

Size code

Without spring = 00
Cracking pressure 0.2bar = 02
Cracking pressure 0.5bar = 05

Further details in clear text

No code = NBR seals
V = FKM seals

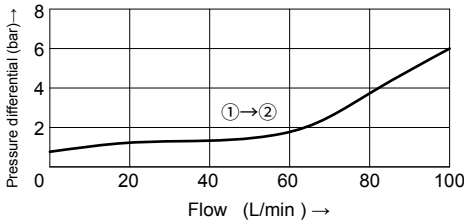
L1X = Series L10 to L19
(L10 to L19: unchanged installation and connection dimensions)

As for the check valve without spring, the fixing position should ensure that the poppet can locate itself closed under its gravity.

Technical data

Weight	kg	0.12
Max.operating pressure	bar	350
Crack pressure	bar	0.2, 0.5
Max.flow-rate	L/min	30
Viscosity fange	mm ² /s	Recommendation 30~80; permision20~380
Fluid temperature range	°C	-30 to +80 (NBR seal)
		-20 to +80 (FKM seal)
Fluid		Mineral oil suit for NBR and FKM seal
		Phosphate ester for FKM seal
Degree of contamination		Maximum permissible degree of fluid contamination: Class 9. NAS 1638 or 20/18/15, ISO4406

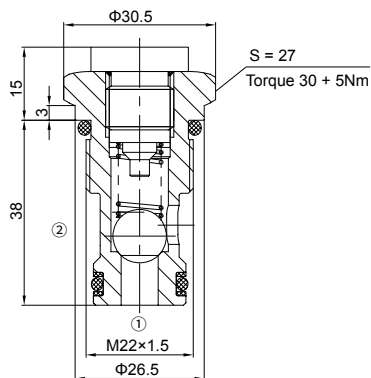
Characteristic curves (Measured at $\vartheta_{oil}=40^{\circ}\text{C} \pm 5^{\circ}\text{C}$, using HLP46)



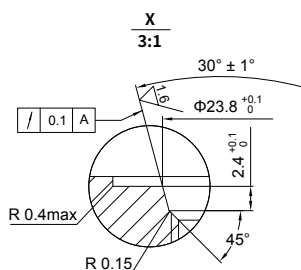
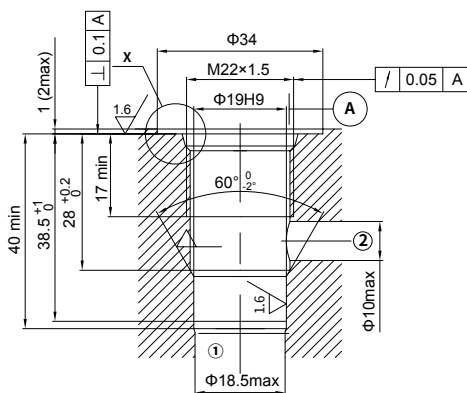
Note: characteristic curve at 0.5bar crack pressure.

Installation dimensions

Outline dimensions:



Cavity dimensions:



China

+86 400 101 8889

America

+01 630 995 3674

Germany

+49 172 3683463

Japan

+81 03 6809 1696



© This brochure can be reproduced, edited, reproduced or transmitted electronically without the authorization of Hengli Hydraulic Company. Due to the continuous development of the product, the information in this brochure is not specific to the specific conditions or applicability of the industry, thus, Hengli does not take any responsibility for any incomplete or inaccurate description.